

Technical data sheet

Product features



Cooking range gas with electric static oven

Model

SAP Code

00008246



- Device type: Combined unit
- Power consumption of the zone 1 [kW]: 7,5
- Power consumption of the zone 2 [kW]: 7,5
- Power consumption of the zone 3 [kW]: 7,5
- Power consumption of the zone 4 [kW]: 4,5
- Ignition: Eternal flame
- Type of internal part of the appliance 1 (eg oven): Electric
- Type of internal part of the appliance 2 (eg oven): Static
- Material: AISI 304 top plate and cladding

SAP Code	00008246	Type of gas	Natural gas, propane butane
Net Width [mm]	800	Number of zones	4
Net Depth [mm]	730	Power consumption of the zone 1 [kW]	7,5
Net Height [mm]	900	Power consumption of the zone 2 [kW]	7,5
Net Weight [kg]	104.80	Power consumption of the zone 3 [kW]	7,5
Power electric [kW]	6.300	Power consumption of the zone 4 [kW]	4,5
Loading	400 V / 3N - 50 Hz	Type of internal part of the appliance 1 (eg oven)	Electric
Power gas [kW]	27.000	Type of internal part of the appliance 2 (eg oven)	Static

Technical data sheet

Technical drawing

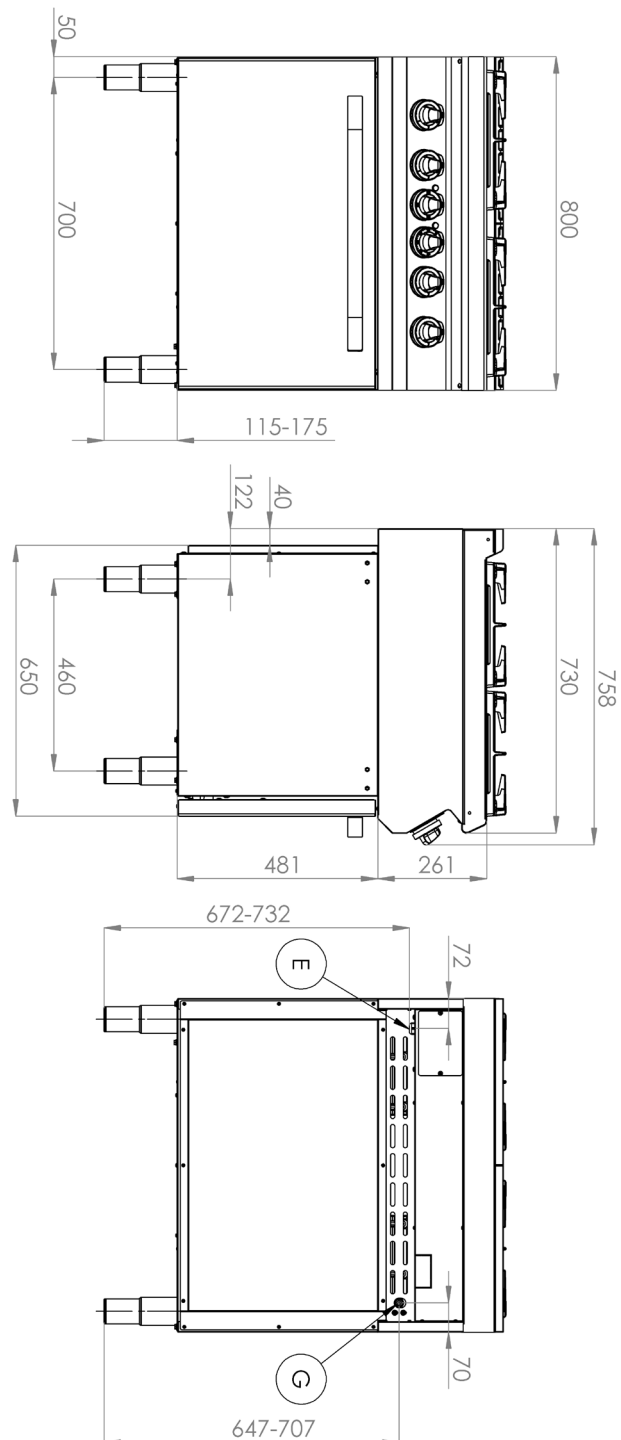


Cooking range gas with electric static oven

Model

SAP Code

00008246



Technical data sheet

Technical parameters



Cooking range gas with electric static oven

Model

SAP Code

00008246

1. SAP Code:

00008246

2. Net Width [mm]:

800

3. Net Depth [mm]:

730

4. Net Height [mm]:

900

5. Net Weight [kg]:

104.80

6. Gross Width [mm]:

840

7. Gross depth [mm]:

800

8. Gross Height [mm]:

1080

9. Gross Weight [kg]:

115.00

10. Device type:

Combined unit

11. Construction type of device:

Stationary

12. Power electric [kW]:

6.300

13. Loading:

400 V / 3N - 50 Hz

14. Power gas [kW]:

27.000

15. Ignition:

Eternal flame

16. Type of gas:

Natural gas, propane butane

17. Exterior color of the device:

Stainless steel

18. Material:

AISI 304 top plate and cladding

19. Worktop type:

Molded - comfortable cleaning maintenance

20. Worktop material:

AISI 304

21. Worktop Thickness [mm]:

1.50

22. Number of zones:

4

23. Power consumption of the zone 1 [kW]:

7,5

24. Power consumption of the zone 2 [kW]:

7,5

25. Power consumption of the zone 3 [kW]:

7,5

26. Power consumption of the zone 4 [kW]:

4,5

27. Grid material:

Cast iron

28. Service accessibility:

Trough the frontal panel

Technical data sheet

Technical parameters



Cooking range gas with electric static oven

Model

SAP Code

00008246

29. Safety thermocouple:

Yes

30. Adjustable feet:

Yes

31. Number of burners/hot plates:

4

32. Type of gas cooking zones:

Cast iron burners

33. Burner type:

Cast iron, detachable, with internal and external combustion

34. Oven Type:

electrical static

35. Oven power electric [kW]:

6.30

36. Oven size:

GN 2/1

37. Type of internal part of the appliance 1 (eg oven):

Electric

38. Type of internal part of the appliance 2 (eg oven):

Static

39. Gasket:

Yes

40. Maximum temperature of the inner chamber [°C]:

300

41. Minimum temperature of the inner chamber [°C]:

50

42. Connection to a ball valve:

1/2

43. Cross-section of conductors CU [mm²]:

1

- Výkon (kW): 3,7-5 (230 V); 6,4-8,7 (400 V)